

SQL Server 2014
Power BI
SharePoint 2013
K2

So What's New?

13 September 2015

- ▶ **Rolf Tesmer**
- ▶ SQL & BI Solution Architect



Agenda

What are we going to discuss today?

About Us

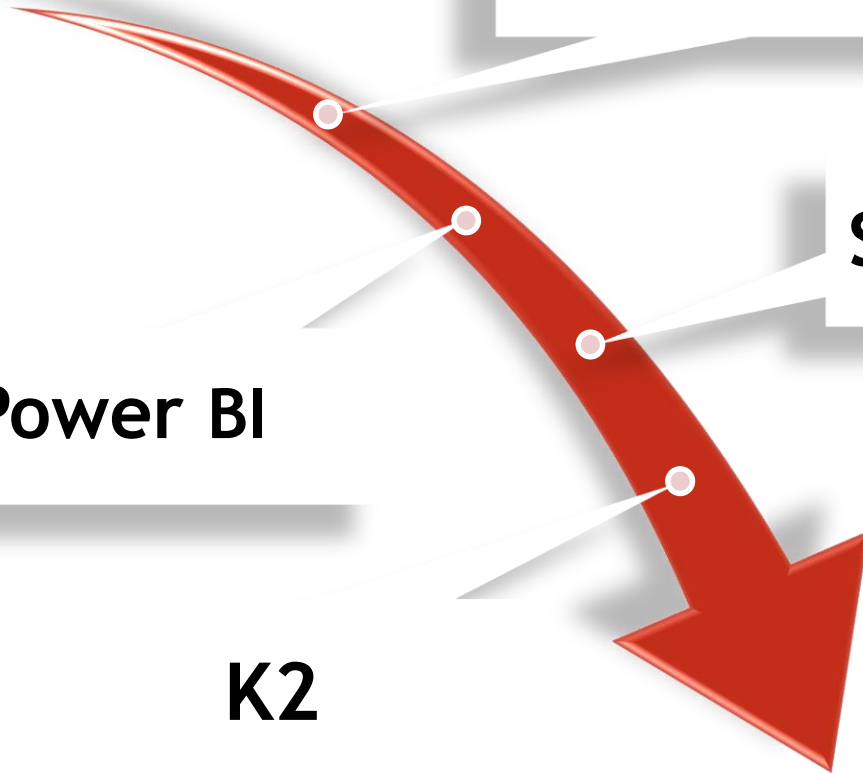
SQL Server 2014

SharePoint & more!

Power BI

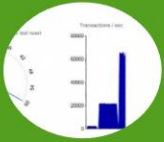
K2

Wrap Up and Summary



SQL Server 2014 - What's New?

Top 5 New Features



**In-Memory
OLTP
(Hekaton)**



**Updatable
Column
Store
Indexes**



**Buffer Pool
Extension
(onto SSD)**



**Resource
Governor for
IO**

Extends RG
functionality to
govern IOPS
Allows MIN and MAX
settings



**Database
Backup
Encryption**

Encryption:
AES 128, AES 192,
AES 256, Triple DES
Encryptor:
Certificate or
asymmetric Key

Feature Goal: Improve Performance & Scalability

Been around since
SQL Server 2012

- **Columnstore** indexes are not new to SQL Server...*a recap...*
 - ▶ A technology for storing, retrieving & managing data by using a **columnar** format
 - ▶ Work well for mostly **read-only queries** that perform analysis on **large data sets**
 - ▶ Is primarily a **memory optimised structure** (but can spool out to IO/Storage)
 - ▶ **~10x query performance gains** ...over traditional row-oriented storage
 - ▶ **~7x data compression** ...over the uncompressed data size
- ▶ **So What's New for SQL 2014...?**
 - ▶ **Clustered columnstore** is available (previously only **non-clustered** was available)
 - ▶ Clustered is the **physical storage structure** for the table
 - ▶ Clustered option has **no key columns**, all columns **MUST** be included
 - ▶ Clustered **MUST** be only index on the table, cannot be combined with others
 - ▶ Columnstore is **updateable** (previously only read-only available)

This is considered a **KEY**
benefit for SQL Server 2014

Extend SQL Buffer Pool Extension (to SSD)

Feature Goal: Improve Performance & Scalability

- The **Buffer Pool** is not new to SQL Server... *a recap...*
 - ▶ One of the main **memory consumers** in SQL Server
 - ▶ When data is **read** from storage it is **cached** in the **Buffer Pool**
 - ▶ SQL caches **Execution Plans** in the **Plan Cache** (part of the **Buffer Pool**)
 - ▶ The more **physical memory** = the larger the **Buffer Pool**
 - ▶ **Typical** approach to resolving I/O bottlenecks? *Add More RAM or More Spindles*
- ▶ **So What's New for SQL 2014...?**
 - ▶ Provides seamless **extension** of Buffer Pool to **nonvolatile RAM** (i.e. SSD)
 - ▶ Significantly improve I/O **throughput**, reduce I/O **latency**, increase **tps** throughput
 - ▶ Creates a **multilevel caching hierarchy** for the Buffer Pool...
 - ▶ **Level 1 (L1)** = DRAM
 - ▶ **Level 2 (L2)** = extension file on SSD
 - ▶ Only **clean pages** are written to the **L2 cache** -- helps maintain **data safety**

As set by SQL config
Max Server Memory


```
1 ALTER SERVER CONFIGURATION
2 SET BUFFER POOL EXTENSION ON
3 (
4     FILENAME = 'd:\ExtensionFile.BPE',
5     SIZE = 10 GB
6 )
7 GO
```

Pre-SQL Server 2012 Deployments

MAINSTREAM Support Ends - July 2014



Any SQL version
prior to SQL 2012
is out of
MAINSTREAM
support
from Jul 2014

- ▶ * So what does this all mean?
 - ▶ NO non-security hotfix support
 - ▶ ALL raised incidents are **charged**
 - ▶ NO warranty claims
 - ▶ NO design changes or feature requests
- ▶ * So what are my options?
 - A. Don't upgrade - and **RISK IT**...
 - B. Buy **EXTENDED** Support Package
 - C. Upgrade to **latest / supported** version
- ▶ * So what are my Next Steps (...talk to us!)
 1. Perform Health Check & Upgrade Review
 2. Plan upgrade roadmap / strategy
 3. Perform upgrade / migration - **testing**
 4. Perform upgrade / migration - **cutover**

Feature Demonstration

In-Memory OLTP (Hekaton) - Bwin online gaming



Agenda

What are we going to discuss today?

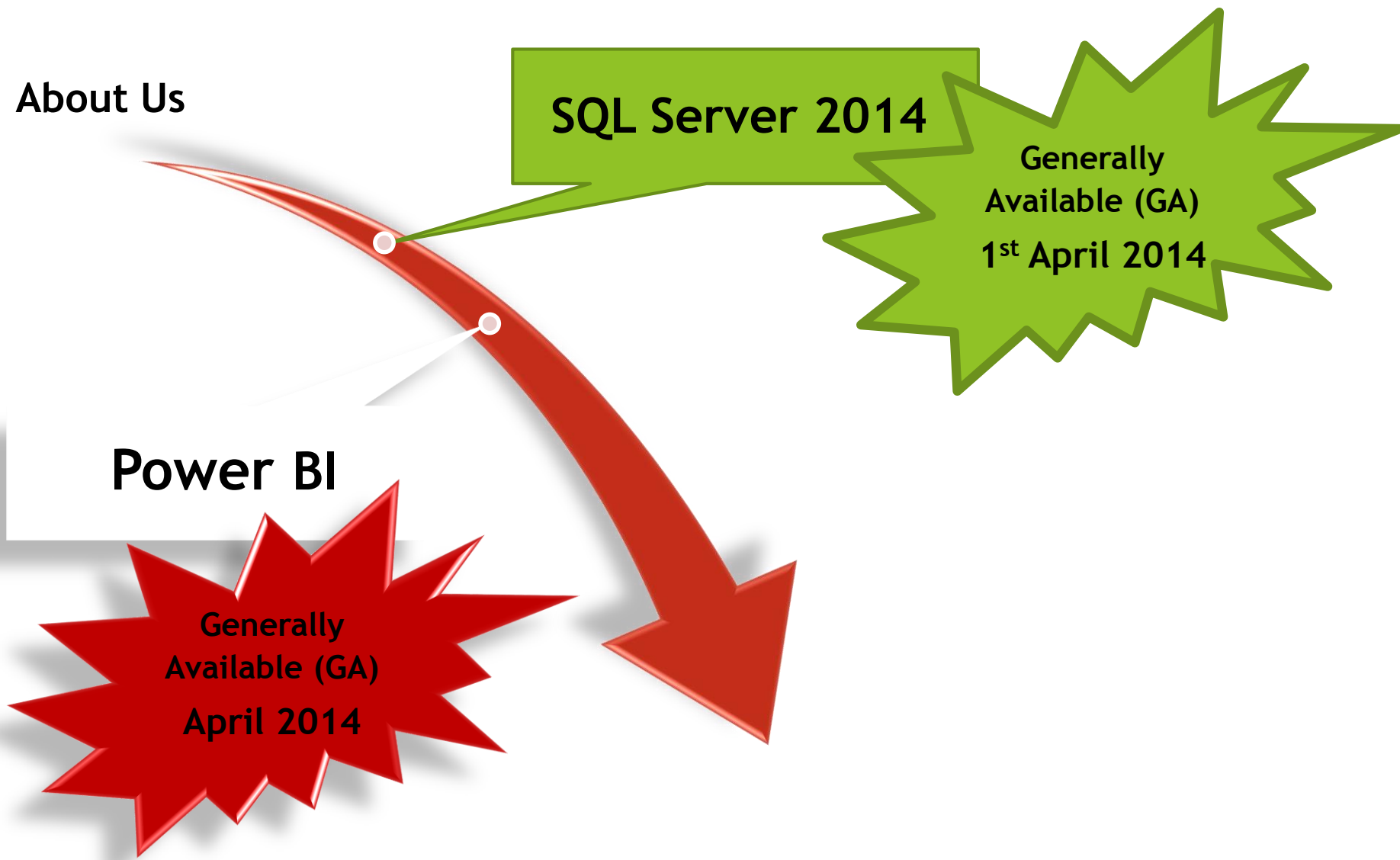
About Us

SQL Server 2014

Generally
Available (GA)
1st April 2014

Power BI

Generally
Available (GA)
April 2014



Power BI - What's New?

Top 5 New Features



Power BI
(Excel Professional)
vs.
(Excel Office 365)
Power Query
Power Pivot
Power View
Power Map



Power BI
(Office 365)
GA April 2014

Generally available
to Australian
Office 365
subscription
customers in Apr



Power BI
(Office 365)
BI Sites
Q&A
Data Experience



Power BI
(Office 365)
Mobile BI App

Windows 8.0/8.1
Windows RT
Apple (in progress)
Android...?



Power BI
(Office 365)
Data Centres

Power BI hosted
in Singapore
ONLY,
NO Australian DC

Power BI - Excel Professional vs. Office 365

What features are in which product

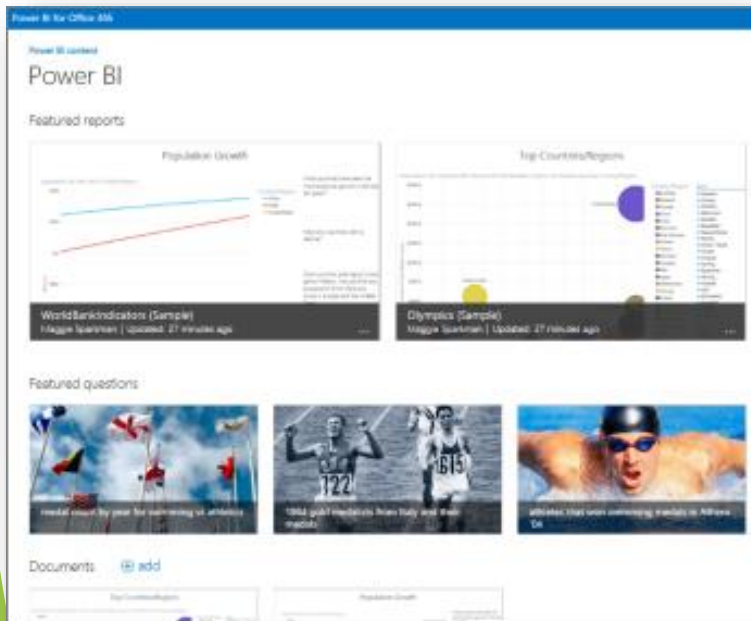
- Where will I find the features I want to use?

Product / Feature		Excel (Professional) On Prem	Office 365 (Subscription) Cloud	SharePoint (Enterprise) On Prem
Power BI	Power Query	Yes	Yes Excel	No
	Power Pivot	Yes	Yes Excel & SharePoint (250MB)	Yes (+ SQL Server Enterprise)
	Power View	Yes	Yes Excel & SharePoint (incl HTML5)	Yes
	Power Map	No	Yes Excel	No
	BI Sites	No	Yes SharePoint & Power BI	Yes
	Q&A	No	Yes SharePoint & Power BI	No
	Data Management Gateway	No	Yes SharePoint & Power BI	No
	Mobile BI App	No	Yes SharePoint & Power BI	No

Power BI for Office 365

Power BI Sites

- **Power BI Sites**
 - ▶ The Power BI sites application *extends* your SharePoint Online site
 - ▶ Provides a robust & dynamic location to share and find Excel workbooks
 - ▶ Enables a **visual & interactive** view tailored specifically to Power BI content
 - ▶ Essentially serves the same purpose as a BI Site on SharePoint Enterprise
 - ▶ Is accessible via client browser or via **Power BI Mobile App**



Feature Demonstration

Mobile Power BI

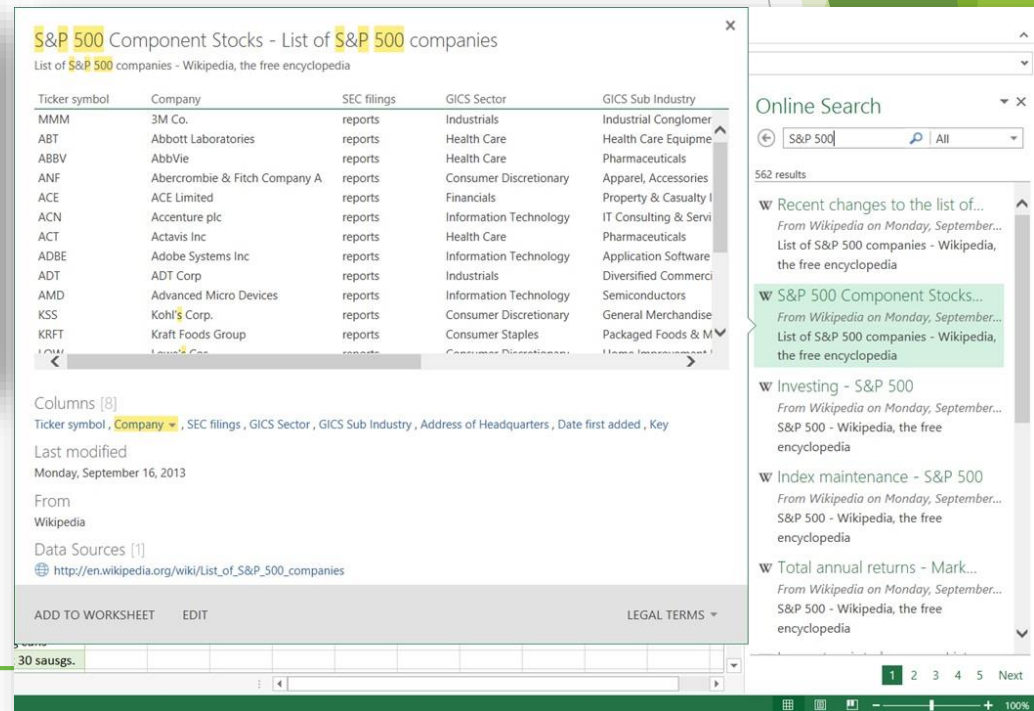
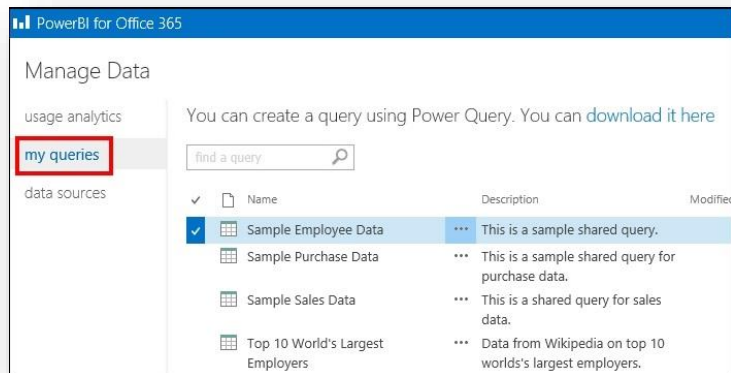


Power BI for Office 365

Power BI Data Management Experience

- Power BI Data Management Experience

- Provides cloud-based infrastructure to enable users to **discover, enrich, and share Excel Power Query workbooks** (data & queries) as shared data sources
- The shared data/content is **discoverable** using Power Query online data search
- Users can perform **BI analytics on shared data/queries** and include **other data**

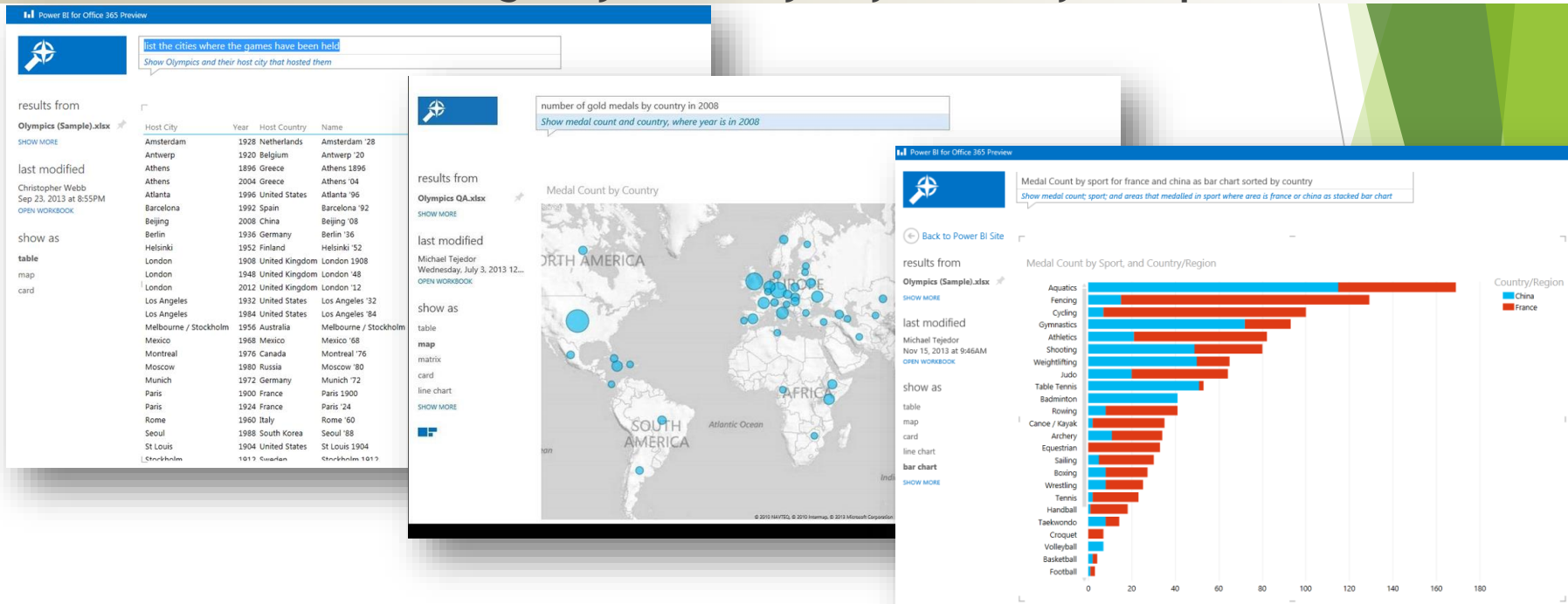


Power BI for Office 365

Power BI Q&A

- Power BI Q&A

- ▶ Use English natural language to find answers in your own data
- ▶ Presents your answers in the form of **visualisations**
- ▶ As you type a question Power BI decides the **best visual** to display your answer
- ▶ The **visualisation changes dynamically** as you modify the question



Feature Demonstration

Power BI for Office 365 - Natural Language Q&A



Agenda

What are we going to discuss today?

About Us

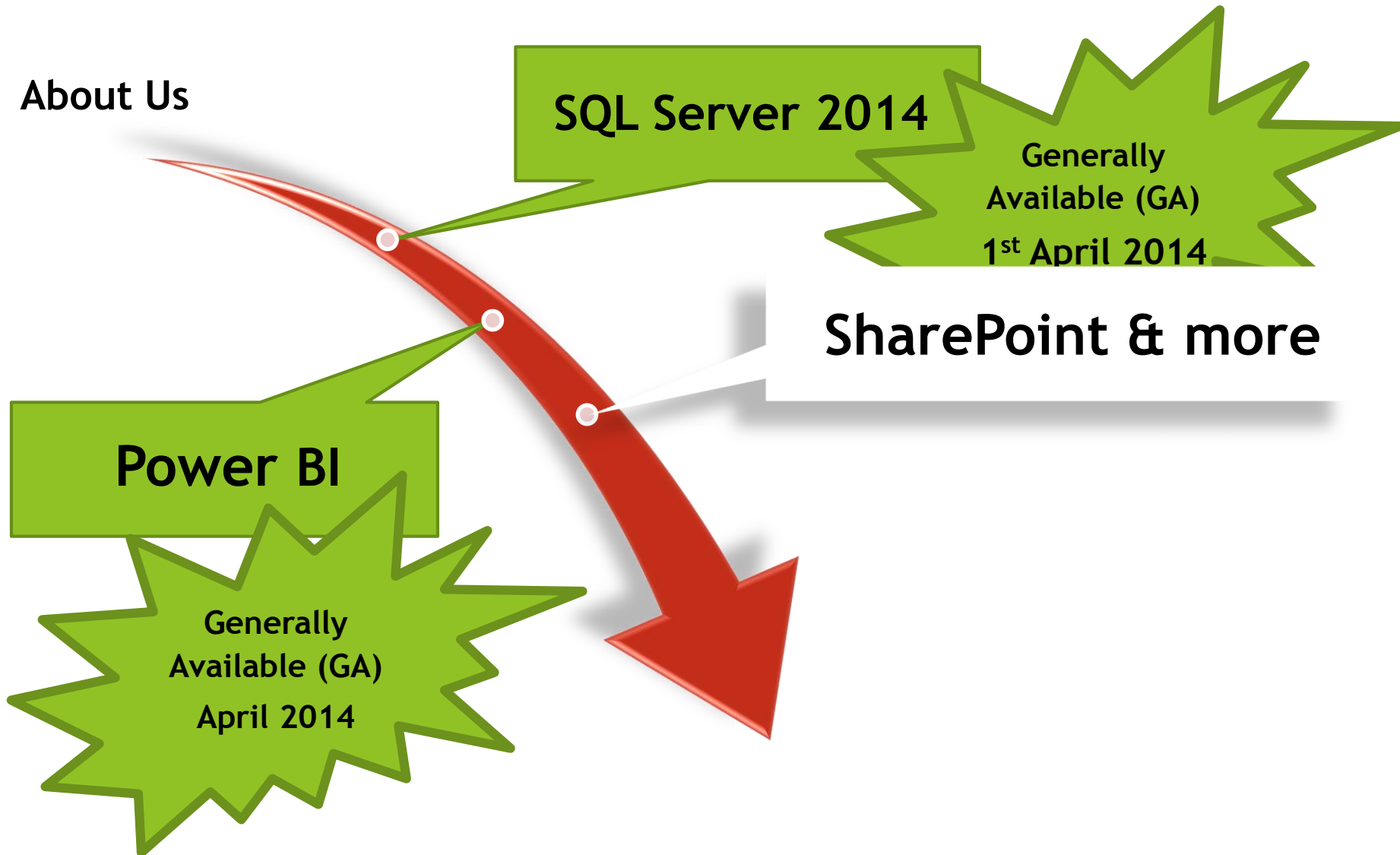
SQL Server 2014

Generally
Available (GA)
1st April 2014

SharePoint & more

Power BI

Generally
Available (GA)
April 2014



SharePoint & more - What's New?

Technology Updates



SP1



Social



Yammer



OneDrive

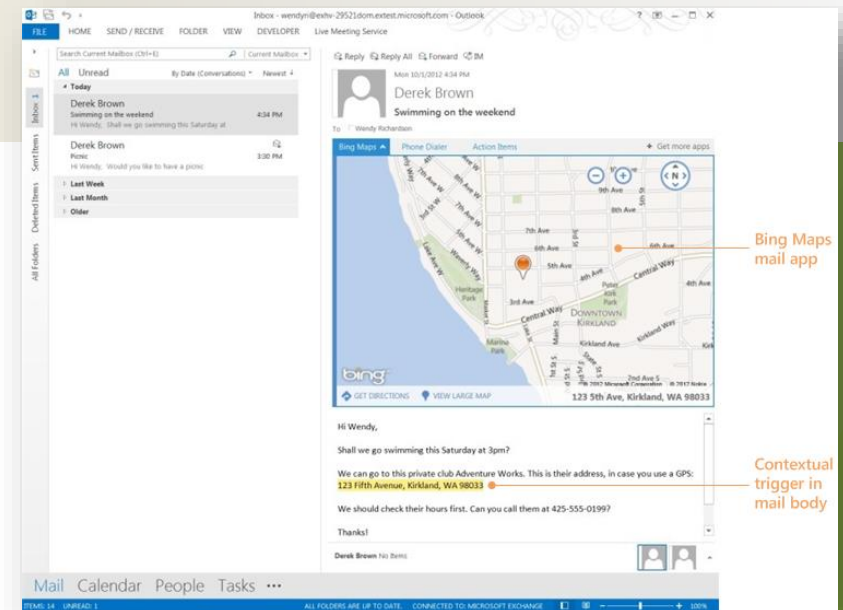


Forms



SharePoint & more Service Pack 1

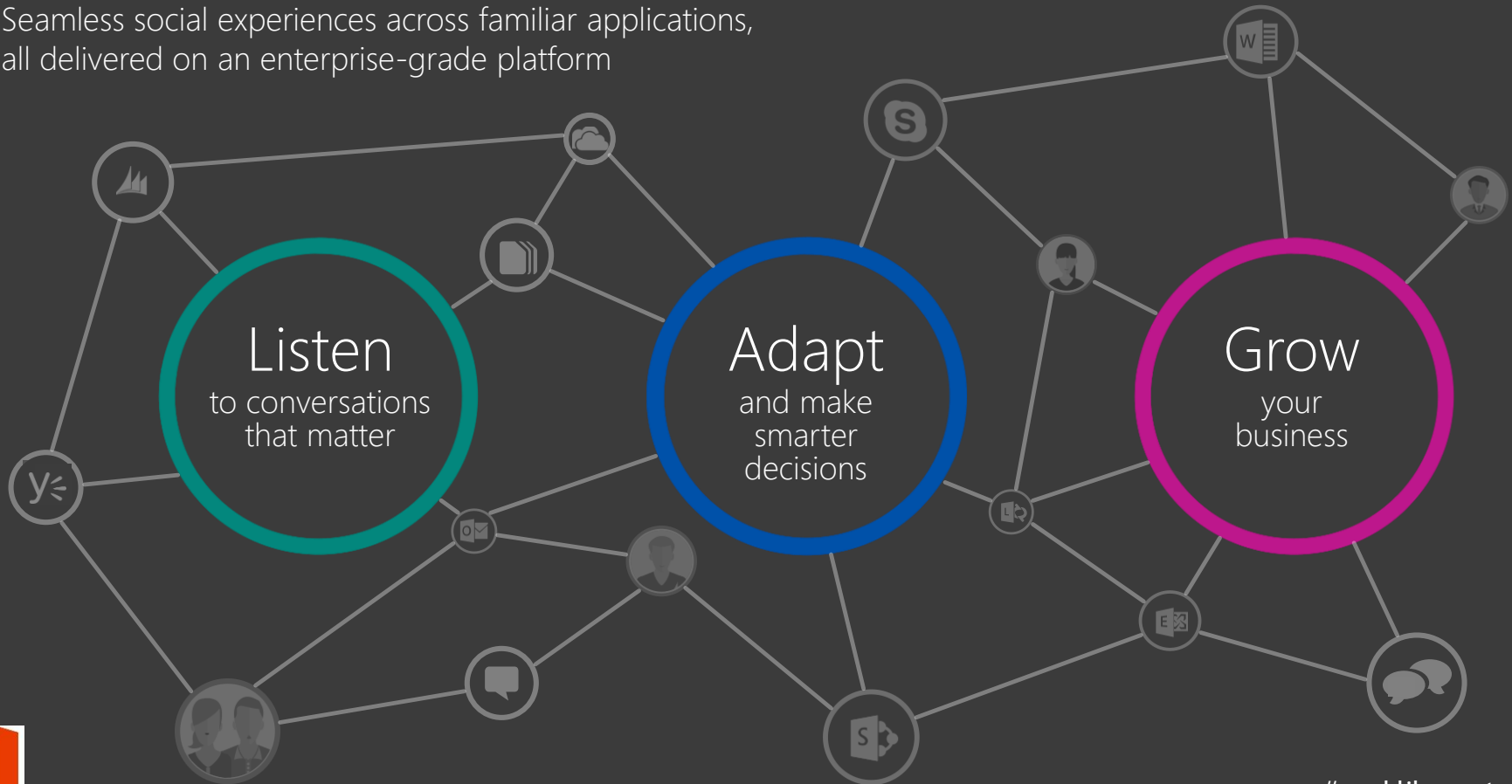
- Compatibility fixes for Windows 8.1 and Internet Explorer 11.
- Modern Hardware: high DPI devices and the precision touchpad
- New Apps for Office updates & developer API's
- Seamless hybrid connection to **OneDrive for Business** in **Office 365**.
- Support for **Yammer** as chosen **social network** (easier to replace default Newsfeed)
- Support for **JSON Light** in **OData**.



SharePoint & more

Social - work like a network

Seamless social experiences across familiar applications,
all delivered on an enterprise-grade platform



#worklikeanetwork



SharePoint & more

Social - new experiences



Inline Social



Groups



Office Graph



Microsoft

Extends social collaboration to Office 365, Dynamics, and other apps, services, and line-of-business systems.



Enables you to participate in social conversations from the tools of your choice

YAMMER CONVERSATIONS

Garth Fort
To All Company, Katie Jordan, and Bonnie Kearney
Katie Jordan/Bonnie Kearney can you please review by Thursday?
Like · Reply · View Conversation · Monday at 2:12pm

Katie Jordan likes this.

Katie Jordan
Can we please schedule a call to discuss Sales numbers today?
Like · Reply · View Conversation · 9 hours ago

Anne Wallace likes this.

Write a reply...

Garth Fort
To Product Launch and Anne Wallace
Anne Wallace can you please provide feedback by Friday?
Like · Reply · View Conversation · 10 hours ago

Anne Wallace likes this.

Anne Wallace
Will do!
Like · Reply · View Conversation · 9 hours ago

Write a reply...

SALES ACTIVITY SOCIAL DASHBOARD

SALES PIPELINE

My Open Opportunities

Stage	Value
1-Qualify	\$1,000,000.00
2-Develop	\$1,790,000.00
3-Propose	\$4,000,000.00

YAMMER SYSTEM POSTS

What are you working on?



Jill Frank • Sales
Here you go Terry Adams
Sales Presentations2
Uploaded to All Company • Files
Like · Reply · View Conversation · October 8 at 11:05pm

Terry Adams • R&D
Have the 3D printer specs been updated to reflect the upcoming release?
Like · Reply · View Conversation · October 7 at 1:37pm from Dynamics CRM

Jay Hamlin: Not final yet Terry Adams. But here is the current draft you can review
3D Printer Spec Sheet
Uploaded to All Company • Files

YOU FOLLOW (192)
181 opportunities
11 users

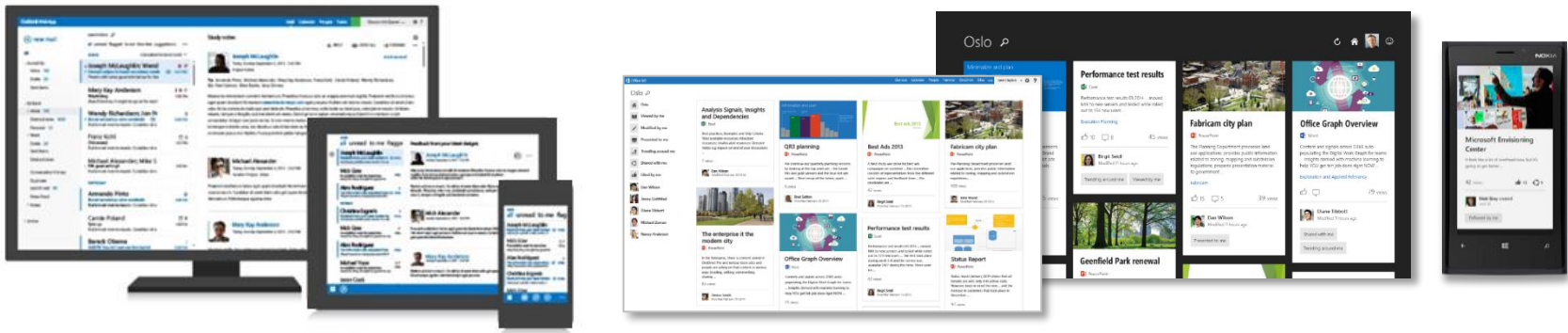
Office Graph

Exchange 
SharePoint 
Yammer 
Lync 

Content and signals across Office 365 auto-populating the Office Graph for teams.



Insights derived with machine learning to help YOU get the job done right NOW



← Dan Wilson

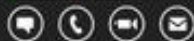


Dan Wilson
SR PROGRAM MANAGER LEAD
FAST PM - Norway

Manager



John Wood



We both work with



Show all 27

Working



Show all 3

← Find...



Presented to me



Modified by me



Liked by me



Shared with me



Trending around me



Viewed by me



David Wright
PRINCIPAL GROUP PM MANAGER
FAST PM - Norway

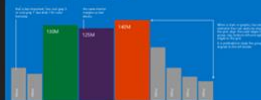


Marie Reinhardt
PROGRAM MANAGER II
FAST PM - Norway



Best Ads 2013

Minimalize and plan



QR 3 planning

PowerPoint

We continue our quarterly planning sessions by looking at the top print ads - the Grand Prix and gold winners and the blue dot ads award ... Short recap of the future, goals and non-goals ...

Information Experiences



45 views

Performance test results

Excel

Performance test results 03 2014 ... moved MIX to new servers and tested while rolled out to 134 new users ...

Execution Planning



10

8

145 views



Birgit Seidl
Modified 11 hours ago

Trending around me

Viewed by me



Fabricam city plan

PowerPoint

The Planning Department processes land use applications, provides public information related to zoning, mapping and subdivision regulations; prepares presentation material to government ...

Fabricam



15

5

139 views



Office Graph Overview

Word

Content and signals across O365 auto-populating the Digital Work Graph for teams ... Insights derived with machine learning to help YOU get the job done right NOW ...

Exploration and Applied Relevancy



179 views



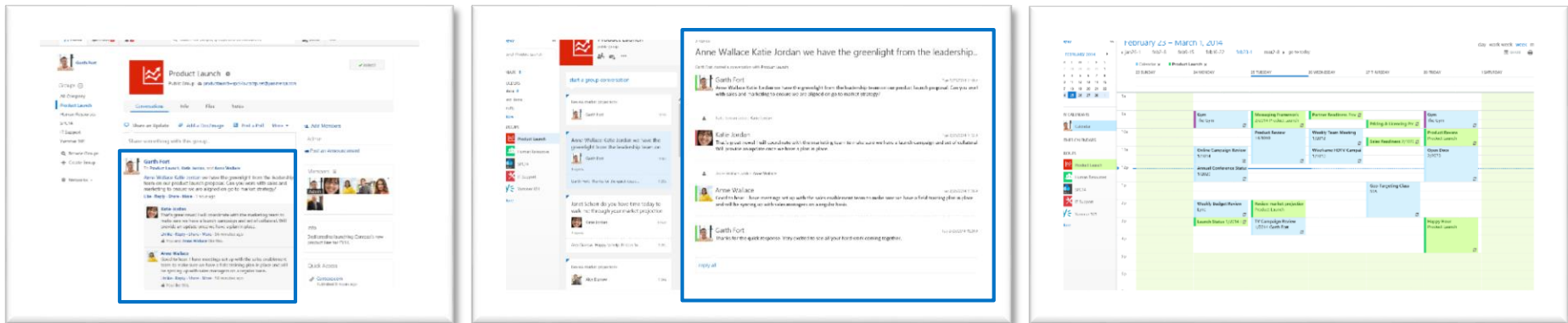
Diane Tibbott

SharePoint & more Yammer

Unifies People, Profiles, Conversations, Emails, Calendars, and Files across Office 365 and beyond.



Provides you with a rich and seamless collaboration experience across applications



SharePoint & more

SharePoint Social or Yammer?

Go Yammer

- Immediate adoption
- Rapid innovation
- Connect everyone

SharePoint on-premises and Yammer

- Service Pack 1 & Yammer app for SharePoint

SharePoint Social futures

- Committed to another SharePoint on-premises release
- Social capabilities will be maintained
- Don't plan on adding new features

Social's future: Yammer and Office 365

- Continued hybrid improvements

SharePoint & more

OneDrive for Business



OneDrive for Business

All my files in *one* place

25GB Storage
Anywhere Access
Sync client

Get work done.
Together.

Office client integration
Co-authoring
Easy sharing

A trusted enterprise-
grade service

Security
Management
Admin Control

SharePoint & more

OneDrive for Business

	OneDrive for Business				Office		Web	
	Win32	Mac *	iOS	Modern	Office Mobile	Office Desktop	mobile	desktop
My Docs	●	●	●	●	●	●	●	●
Team Sites	●	-	-	-	●	●	-	●
Recents	-	-	●	●	●	●	●	●
Shared with me	-	-	-	-	-	-	●	●
Offline	●	●	●	-	◐	◐	-	-
Sync & merge	●	◐	-	-	◐	●	-	-
Share	●	-	●	●	◐	●	●	●
Move	●	●	-	-	-	-	-	-
Rename	●	●	●	●	-	-	-	-
Upload / Save	●	●	●	●	●	●	-	●
Camera Upload	-	-	-	-	-	-	-	-
Edit	-	-	◐	◐	●	●	-	●

- fully implemented
- ◐ partially implemented
- not implemented OR n/a

* planned 2014

SharePoint & more

Forms

- InfoPath - no further investment, support for next 10 years.
- No replacement technology yet, so no migration strategy.

FORM TYPES

USER SCENARIOS

TIMEFRAME

Excel Surveys



Design
Excel Online—Excel
Surveys

Completion
Web



Online
Continuously
shipping

On-premises
Included with
Office 2013

List Forms



Design
“FoSL”—Forms on
SharePoint Lists

Completion
SharePoint



Online
Summer 2014–
October 2015

On-premises
SharePoint
vNext

Structured
Documents



Word



Plans at the end of 2014

App Forms



Design
Access

Completion
SharePoint



Online
Continuously
shipping

On-premises
Included with
Office 2013

SharePoint & more Forms Options



Agenda

What are we going to discuss today?

About Us

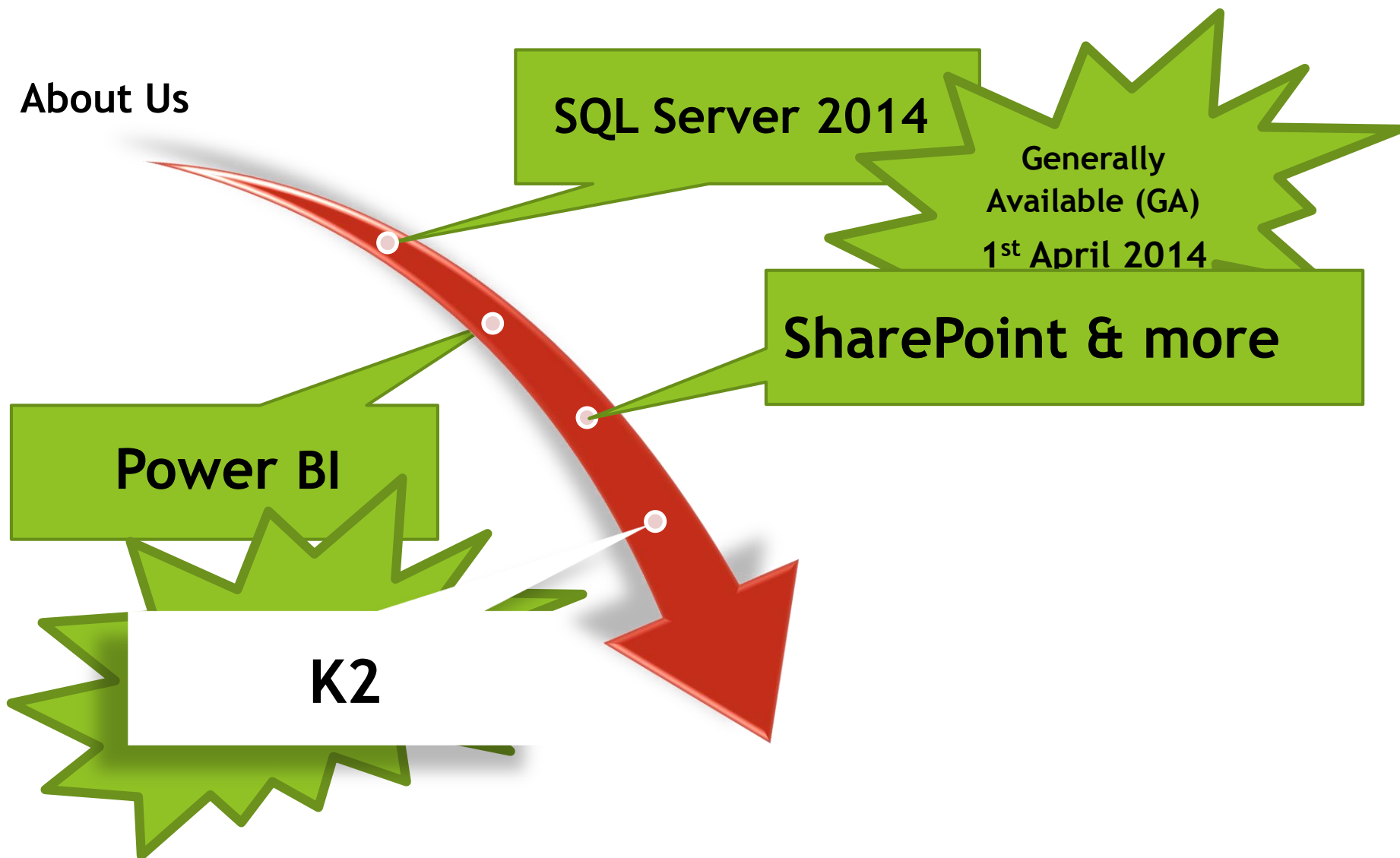
SQL Server 2014

Generally
Available (GA)
1st April 2014

SharePoint & more

Power BI

K2



K2 - What's New?

Top Updates



K2 for
SharePoint



Forms



Community



Mobile



K2

K2 for SharePoint

- K2 for SharePoint 2013 released on **26 March 2014**
- K2 featured in **several keynotes** at SharePoint Conference 2014
- “K2 runs on Microsoft, Microsoft runs on K2”
- K2 was the **Diamond Sponsor** of SharePoint Conference 2014
- A **lot of excitement** around this significant release
- Supports **full spectrum of user needs** from simple to complex
- **Feature parity** across SharePoint Online and On Premise and supports **hybrid infrastructures**



Additional Information:
<http://www.k2.com/sharepoint>

K2

K2 smartforms

- Microsoft formally announced that they are **no longer investing in InfoPath**
- Microsoft Future of Forms for SharePoint session at SPC 2014 **did not reveal any significant replacement**
- **K2 smartforms** ideally placed to provide forms both inside and outside of SharePoint
- **A lot of excitement** around K2 smartforms at SPC 2014



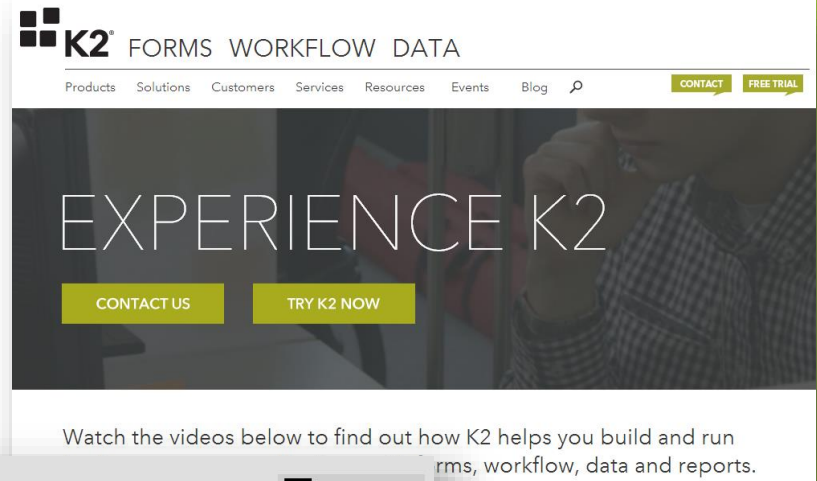
Additional Information:

<http://www.k2.com/blog>

<http://www.k2.com/platform/forms>

K2 Community

- Provides the ability to get your hands on K2 and play for yourself via “Try Now”
- View **videos** on various parts of the K2 platform:
 - Designing Forms
 - Rules in Forms
 - Data in Forms
 - Using Forms
 - Designing Workflows
 - Rules in Workflows
 - Task Routing
 - Managing Workflows
 - Task Management
 - Designing Data Access
 - OOB Data Options
 - Designing Dashboards
 - Notifications
 - SharePoint Data
 - SharePoint Apps



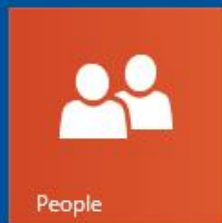
Additional Information:

<http://www.k2.com/experience-k2>

K2 Mobile



Start



Agenda

What are we going to discuss today?

About Us

SQL Server 2014

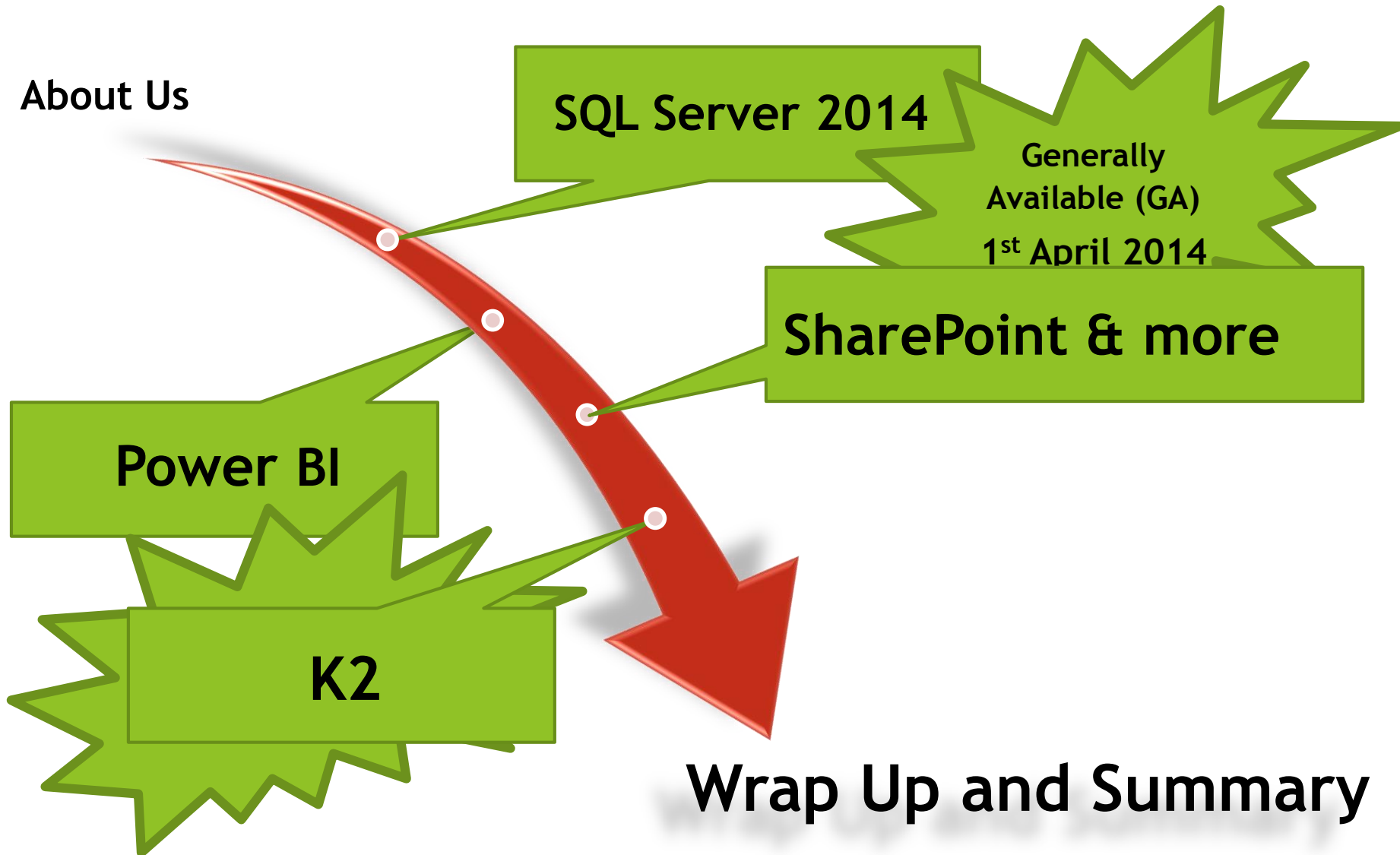
Generally
Available (GA)
1st April 2014

SharePoint & more

Power BI

K2

Wrap Up and Summary



Agenda

What did we cover today?

- ✓ **SQL Server 2014 - Top 5 Features**
- ✓ **Power BI - Top 5 Features**
- ✓ **SharePoint & more - Social,
Yammer & Forms!**
- ✓ **K2 - Top Announcements**

Appendix and References

Appendix

References

Appendix - References

- SQL Server 6.0, 6.5, 7.0, 2000, 2005, 2008, 2008 R2, 2012 and 2014 Books Online
Microsoft
- Power BI (Power Map) available only to Office 365 customers from 30 May 2014
<http://www.office.microsoft.com/en-us/excel-help/power-map-for-excel-HA104204034.aspx>
- Power BI App
<http://office.microsoft.com/en-us/office365-sharepoint-online-enterprise-help/faq-about-the-power-bi-app-HA104095891.aspx?CTT=5&origin=HA104095846>
- SQL 2014 Hekaton
<http://channel9.msdn.com/Events/TechEd/Australia/2013/DBI226>
<http://www.mssqltips.com/sqlservertip/3106/sql-server-2014-inmemory-oltp-architecture-and-data-storage/>
- Microsoft Support Lifecycle FAQ
<http://support.microsoft.com/gp/lifepolicy>